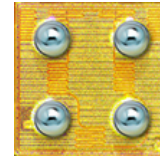


EPC2038_55 – Enhancement-Mode Power Transistor Preliminary Specification Sheet

Features:

- V_{DS} , 100 V
- Internal Gate Diode
- Maximum $R_{DS(on)}$, 3300 m Ω
- I_D , 0.5 A



EPC2038_55 eGaN[®] FETs are supplied in passivated die form with solder bars.
Die Size: 0.9 mm x 0.9 mm

Maximum Ratings			
V_{DS}	Drain-to-Source Voltage (Continuous)	100	V
	Drain-to-Source Voltage (up to 10,000 5ms pulses at 150°C)	120	
I_D	Continuous ($T_A = 25^\circ\text{C}$, $R_{\theta JA} = 100^\circ\text{C/W}$)	0.5	A
	Pulsed (25°C , $T_{PULSE} = 300 \mu\text{s}$)	0.5	
V_{GS}	Gate-to-Source Voltage	6	V
	Gate-to-Source Voltage	-4	
T_J	Operating Temperature	-55 to 150	°C
T_{STG}	Storage Temperature	-55 to 150	

Static Characteristics ($T_J = 25^\circ\text{C}$ unless otherwise stated)						
PARAMETER		TEST CONDITIONS	MIN	TYP	MAX	UNIT
BV_{DSS}	Drain-to-Source Voltage	$V_{GS} = 0 \text{ V}$, $I_D = 125 \mu\text{A}$	100			V
I_{DSS}	Drain Source Leakage	$V_{DS} = 80 \text{ V}$, $V_{GS} = 0 \text{ V}$, $T_J = 25^\circ\text{C}$		20	100	μA
		$V_{DS} = 80 \text{ V}$, $V_{GS} = 0 \text{ V}$, $T_J = -55^\circ\text{C}$		0.2	100	μA
I_{GSS}	Gate-to-Source Forward Leakage	$V_{GS} = 5 \text{ V}$, $T_J = 25^\circ\text{C}$		0.1	500	μA
		$V_{GS} = 5 \text{ V}$, $T_J = -55^\circ\text{C}$		0.01	500	μA
$V_{GS(TH)}$	Gate Threshold Voltage	$V_{DS} = V_{GS}$, $I_D = 0.1 \text{ mA}$, $T_J = 25^\circ\text{C}$	0.8	1.4	2.5	V
		$V_{DS} = V_{GS}$, $I_D = 0.1 \text{ mA}$, $T_J = -55^\circ\text{C}$	0.8	1.6	2.5	V
$R_{DS(on)}$	Drain-Source On Resistance	$V_{GS} = 5 \text{ V}$, $I_D = 0.05 \text{ A}$, $T_J = 25^\circ\text{C}$		2100	3300	m Ω
		$V_{GS} = 5 \text{ V}$, $I_D = 0.05 \text{ A}$, $T_J = -55^\circ\text{C}$		1400	2400	m Ω

All measurements were done with substrate shorted to source.

Thermal Characteristics			
		TYP	UNIT
$R_{\theta JC}$	Thermal Resistance, Junction to Case	27	°C/W
$R_{\theta JB}$	Thermal Resistance, Junction to Board	91	°C/W
$R_{\theta JA}$	Thermal Resistance, Junction to Ambient (Note 1)	100	°C/W

Note 1: $R_{\theta JA}$ is determined with the device mounted on one square inch of copper pad, single layer 2 oz copper on FR4 board.
 See http://epc-co.com/epc/documents/product-training/Appnote_Thermal_Performance_of_eGaN_FETs.pdf for details.

EPC2038_55 – Enhancement-Mode Power Transistor

Preliminary Specification Sheet

PARAMETER		TEST CONDITIONS	MIN	TYP	MAX	UNIT
C_{ISS}	Input Capacitance	$V_{DS} = 50\text{ V}, V_{GS} = 0\text{ V}$		7	8.4	pF
C_{RSS}	Reverse Transfer			0.02		
C_{OSS}	Output Capacitance			1.6	2.4	
$C_{OSS(ER)}$	Effective Output Capacitance, Energy Related (Note 2)	$V_{DS} = 0\text{ to }50\text{ V}, V_{GS} = 0\text{ V}$		2.2		
$C_{OSS(TR)}$	Effective Output Capacitance, Time Related (Note 3)			2.7		
R_G	Gate Resistance			4.8		Ω
Q_G	Total Gate Charge	$V_{DS} = 50\text{ V}, V_{GS} = 5\text{ V}, I_D = 0.05\text{ A}$		44		nC
Q_{GS}	Gate-to-Source Charge	$V_{DS} = 50\text{ V}, I_D = 0.05\text{ A}$		20		
Q_{GD}	Gate-to-Drain Charge			4		
$Q_{G(TH)}$	Gate Charge at Threshold			18		
Q_{OSS}	Output Charge	$V_{DS} = 50\text{ V}, V_{GS} = 0\text{ V}$		134		
Q_{RR}	Source-Drain Recovery			0		

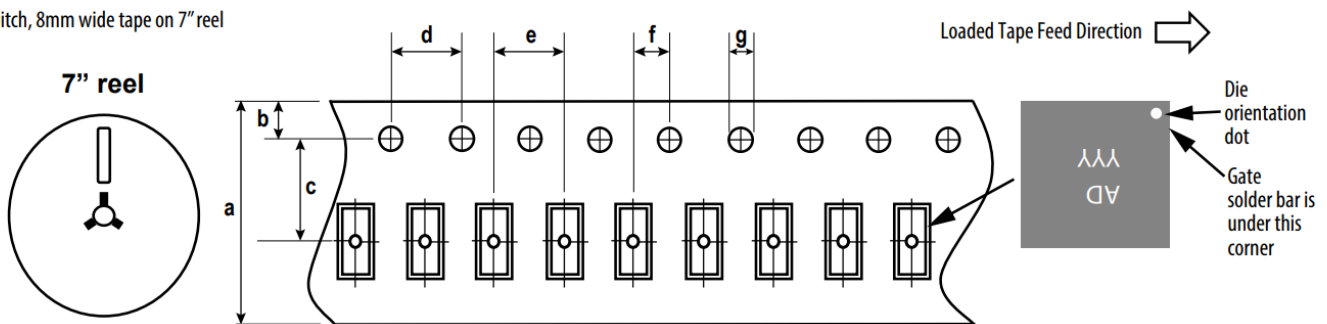
All measurements were done with substrate shorted to source.

Note 2: $C_{OSS(ER)}$ is a fixed capacitance that gives the same stored energy as C_{OSS} while V_{DS} is rising from 0 to 50% BV_{DSS}

Note 3: $C_{OSS(TR)}$ is a fixed capacitance that gives the same charging time as C_{OSS} while V_{DS} is rising from 0 to 50% BV_{DSS}

TAPE AND REEL CONFIGURATION

4mm pitch, 8mm wide tape on 7" reel



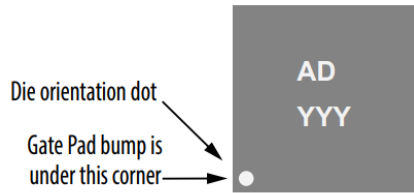
Dimension (mm)	EPC2038 (note 1)		
	target	min	max
a	8.00	7.90	8.30
b	1.75	1.65	1.85
c (see note)	3.50	3.45	3.55
d	4.00	3.90	4.10
e	4.00	3.90	4.10
f (see note)	2.00	1.95	2.05
g	1.5	1.5	1.6

Note 1: MSL 1 (moisture sensitivity level 1) classified according to IPC/JEDEC industry standard.
 Note 2: Pocket position is relative to the sprocket hole measured as true position of the pocket, not the pocket hole.

EPC2038_55 – Enhancement-Mode Power Transistor

Preliminary Specification Sheet

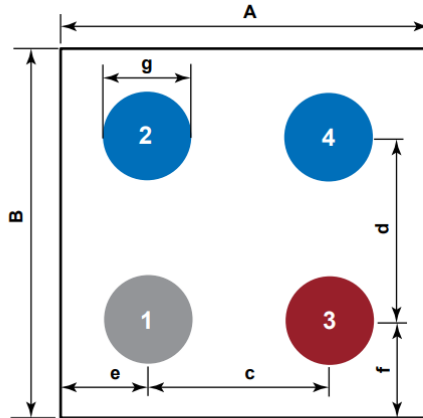
DIE MARKINGS



Part Number	Laser Markings	
	Part # Marking Line 1	Lot_Date Code Marking line 2
EPC2038	AD	YYY

DIE OUTLINE

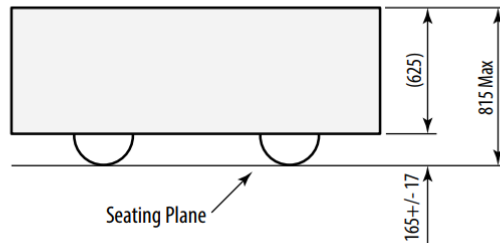
Solder Bump View



Pad 1 is Gate;
Pad 3 is Drain;
Pads 2, 4 are Source

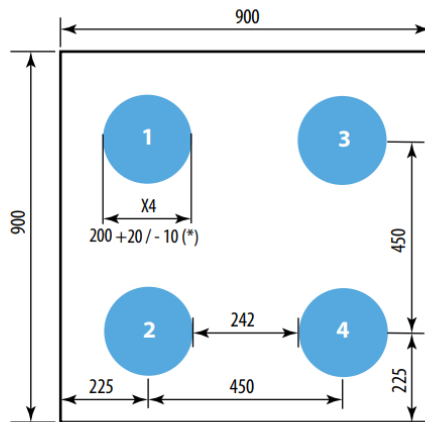
DIM	MIN	Nominal	MAX
A	870	900	930
B	870	900	930
c	450	450	450
d	450	450	450
e	210	225	240
f	210	225	240
g	187	208	229

Side View



RECOMMENDED LAND PATTERN

(measurements in μm)



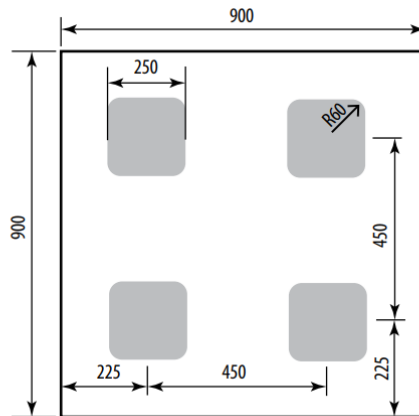
* minimum 190

The land pattern is solder mask defined
Solder mask is $10\ \mu\text{m}$ smaller per side than bump

Pad 1 is Gate;
Pad 3 is Drain;
Pads 2, 4 are Source

EPC2038_55 – Enhancement-Mode Power Transistor Preliminary Specification Sheet

RECOMMENDED STENCIL DRAWING *(measurements in μm)*



Recommended stencil should be 4mil (100 μm) thick, must be laser cut, openings per drawing.

Intended for use with SAC305 Type 4 solder, reference 88.5% metals content.

Additional assembly resources available at
<http://epc-co.com/epc/DesignSupport/AssemblyBasics.aspx>

Efficient Power Conversion Corporation (EPC) reserves the right to make changes without further notice to any products herein to improve reliability, function or design. EPC does not assume any liability arising out of the application or use of any product or circuit described herein; neither does it convey any license under its patent rights, nor the rights of others.

eGaN[®] is a registered trademark of Efficient Power Conversion Corporation.
EPC Patents: <http://epc-co.com/epc/AboutEPC/Patents.aspx>

Revised September 30, 2019